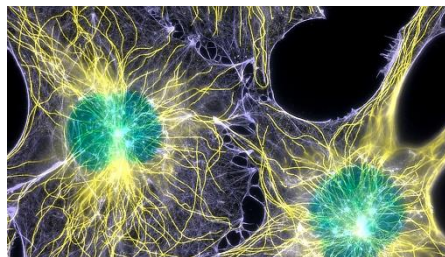


Biology



Introduction to Biology

In Biology we will be following the EDEXCEL Nuffield-Salters Syllabus. This syllabus has been chosen as it best prepares you for university and/or if you wish to pursue a career in a biology related field. The skills you gain in are highly-transferable to lots of other subjects and the qualification is looked on favourably by many universities and employers. The topics in A Level Biology cover a broad range and build on your GCSE knowledge. You will cover topics from DNA replication and protein synthesis, to how nerve impulses travel along your neurons, to how your cells actually make the energy you need to do everything you do.

Course Outline

Year 12

Lifestyle, health and risk
Genes and Health
Voice of the genome
Biodiversity and natural resources

Year 13 (All AS content plus:)

On the wild side
Immunity, Infection and Forensics
Run for your life
Grey Matter

A-Level Biology is studied here as a linear course.

Career Progression

Biology equips you with many transferrable skills that can be used in a wide range of subject areas. Universities and employers look favourably on an A-level in biology, especially using the exam board Edexcel Nuffield-Salters. A Level in Biology opens up a wide choice of future careers, including: Medicine, Dentistry, Veterinary Sciences, Physiotherapy, Pharmacy, Environmental Sciences, Forensics, Psychology and Engineering.

Complementary Subjects

Chemistry, Physics, Psychology and Maths

Entry requirements

GCSE Biology: **7**
GCSE Trilogy: **7** in Biology Paper 1 and Biology Paper 2
GCSE Maths: **6**

What our Students say:

"It opens lots of career choices to me, whilst also giving me the opportunity to find out more about the world around me and in particular the human body, something that fascinates me "

Malaz